

CERTIFICATE OF LOCATION OF GOVERNMENT CORNER

County of Anoka

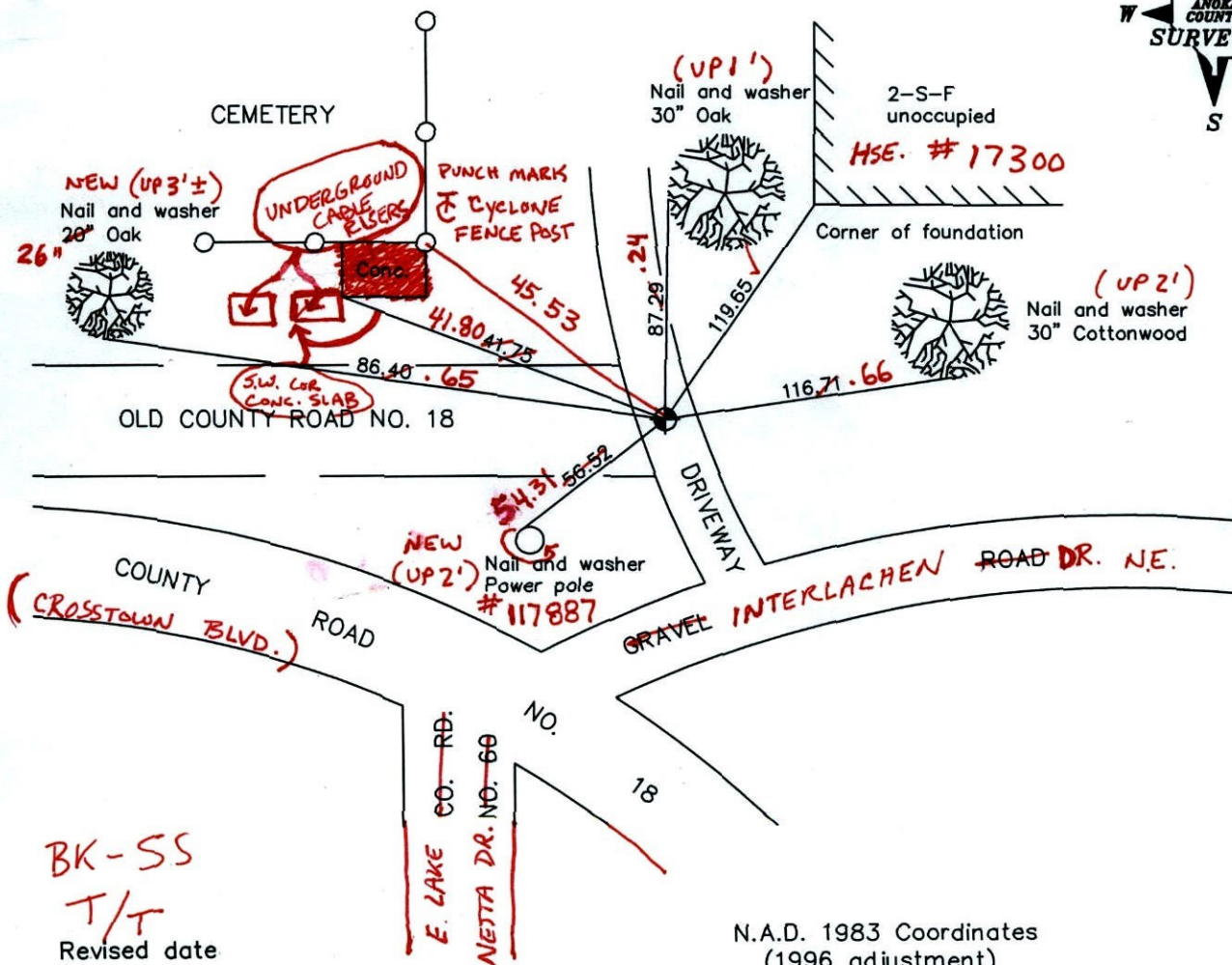
State of Minnesota

South $\frac{1}{4}$ Corner of Sec. 3 Township 32 Range 23

I hereby certify that on the 22nd day of December, 1960, I found the described corner which was evidenced by a concrete monument

and I further certify that to perpetuate the location of said corner, I did, at the exact location thereof, place a permanent marker consisting of a cast iron monument down .5 feet more or less

which reference or witness monuments are located in the manner following:



BK-SS
T/T
Revised date

10/18/91
8/07/96
1/03/02
4-12-11

N.A.D. 1983 Coordinates
(1996 adjustment)

County Project Coordinates	State Plane Coordinates
Northing <u>190645.8330</u>	Y _____
Easting <u>518746.4062</u>	X _____

Date 1/03/02

CERTIFICATE OF LOCATION OF GOVERNMENT CORNER

County of Anoka

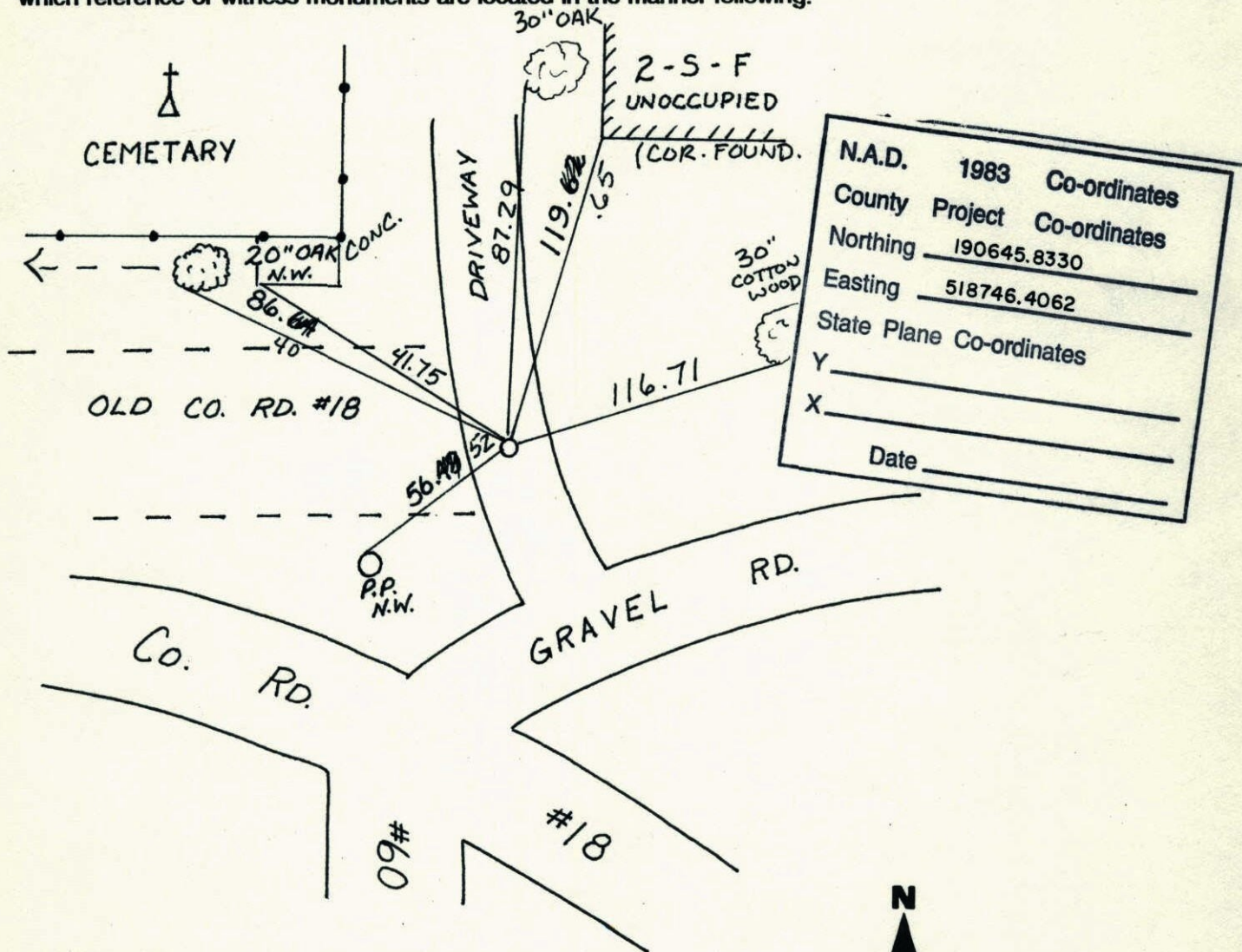
State of Minnesota

SOUTH QTR Corner of Sec. 3 Township 32 Range 23

I hereby certify that on the 22 day of DEC., 1960, I found the described corner which was evidenced by CONCRETE MON.

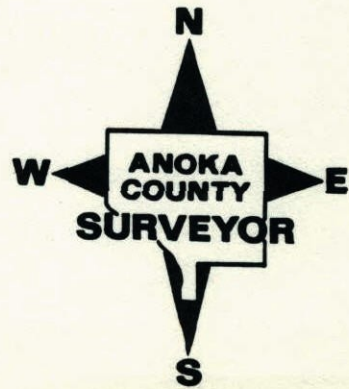
and I further certify that to perpetuate the location of said corner, I did, at the exact location thereof, place a permanent marker consisting of CAST IRON MON. DOWN .5' ±

which reference or witness monuments are located in the manner following:

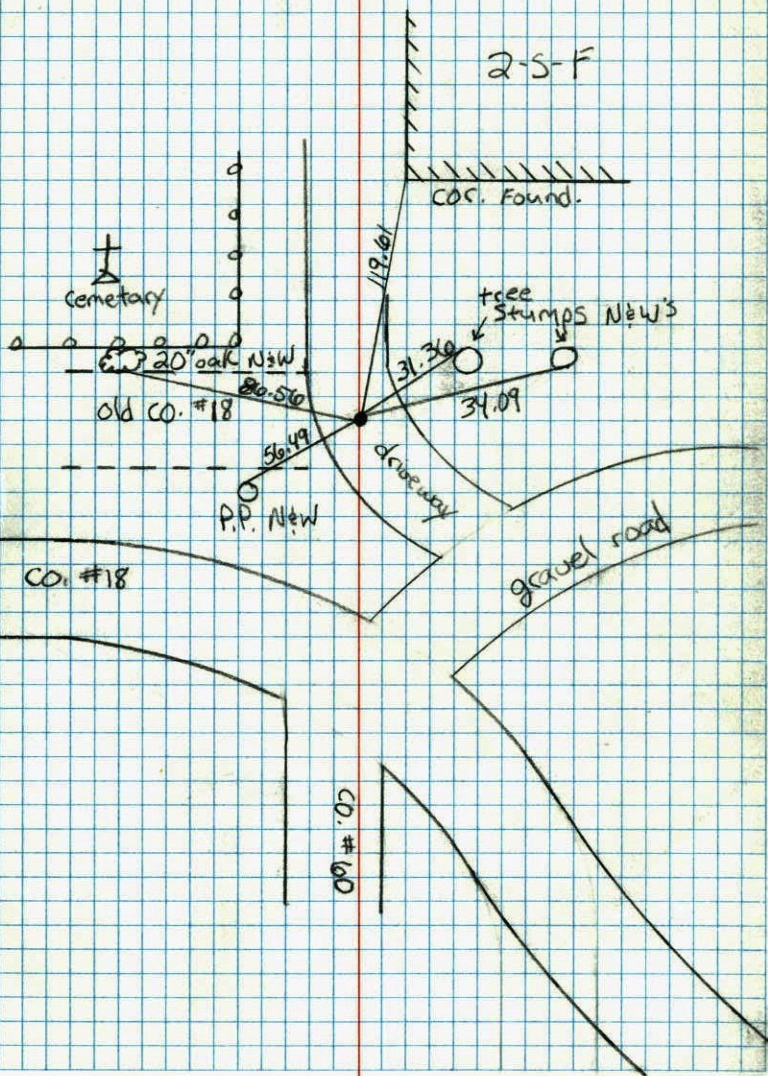


N.A.D.	1983	Co-ordinates
County	Project	Co-ordinates
Northing		190645.8330
Easting		518746.4062
State Plane Co-ordinates		
Y		_____
X		_____
Date _____		

Revised date	Revised date	Revised date
10-18-91		
8-7-96		
1-3-02		



S 1/4 cor. Sec 3 T32. R23 27



S 1/4 COR. SEC 3, T32, R23

REINFORCED CONCRETE MONUMENT 6" x 4" DOWN 0.5' ±

TOP BROKEN OFF, IRON ON NORTH SIDE 22 DEC 60
R. FREEMAN
M. ANDERSON

REPLACED CONCRETE MONUMENT WITH CAST IRON

MONUMENT DOWN 0.5' ± 9 JUL 74

R. FARMER
N. DAHL
D. DAHL

30" OAK
CHECKS
WITH OLD
TIE (1918)

SEE
NEW TIES

OLD
TIE
1918

NAIL & WASHER
18" COTTONWOOD

NAIL & WASHER
GUY POLE

NAIL & WASHER
14" OAK

NAIL & WASHER
18" COTTONWOOD

COUNTY
ROAD #18

GRAVEL
ROAD

NAIL & WASHER
POWER POLE

NAIL & WASHER
POWER POLE

Tie Check
June 8, 1978
D. Dahl
B. Stephans
M. Kisorow

Tie Check
10-25-81
P. Ross
P. Hornby
G. Neffinger

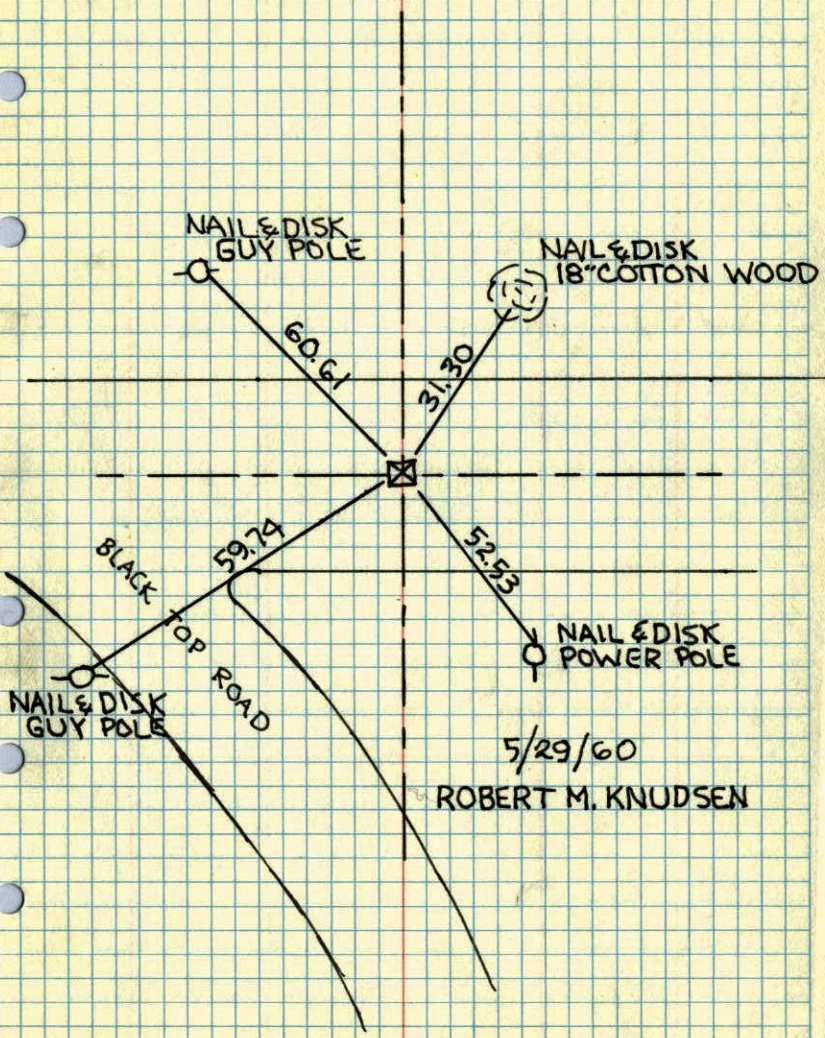
TIE CHECK
4 JUN 75
D. DAHL
B. SANNERUD
G. ADAMS

REDRAWN
JAN '77
B. GUETZHO

TEMPERATURE CORRECTED
AND HORIZONTALLY
TAPED MEASUREMENTS

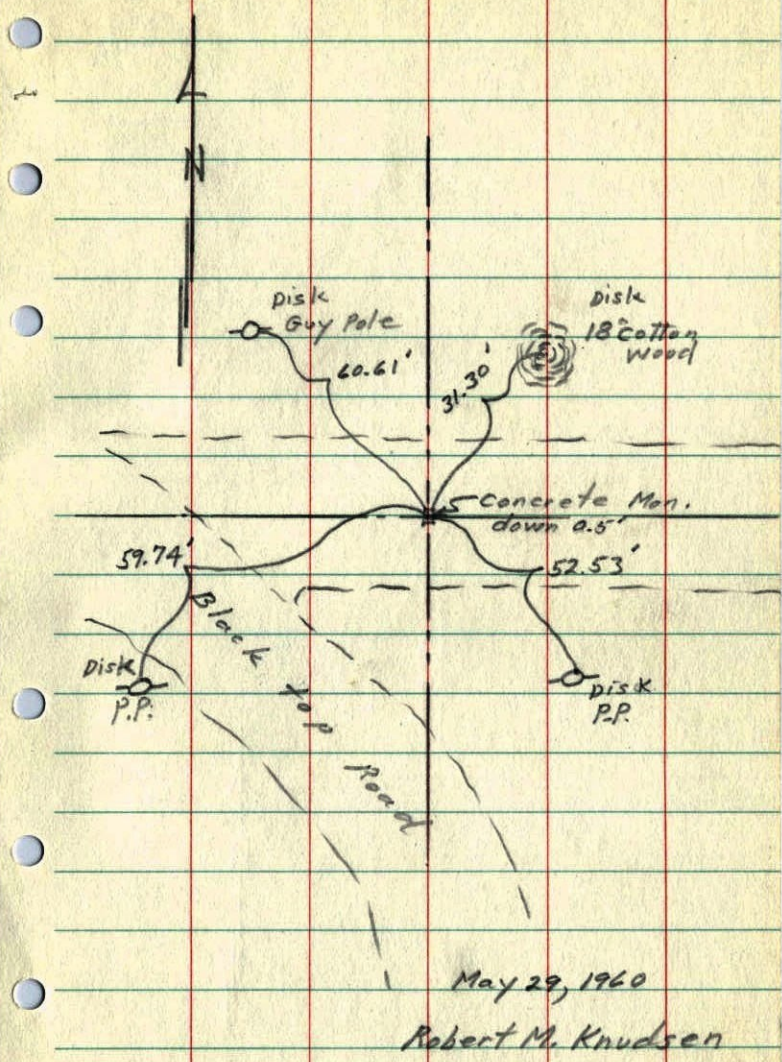
ROLAND W. ANDERSON
COUNTY SURVEYOR
ANOKA COUNTY, MINNESOTA

1/4 Cor. Sec. 3, T. 32, R. 23
CONCRETE MONUMENT
DOWN 0.5'



5/29/60
ROBERT M. KNUDSEN

1/4 Cor. Sec. 3-32-23



May 29, 1960
Robert M. Knudsen

S 1/4 CORNER TIE
SECTION 3-32-23

